



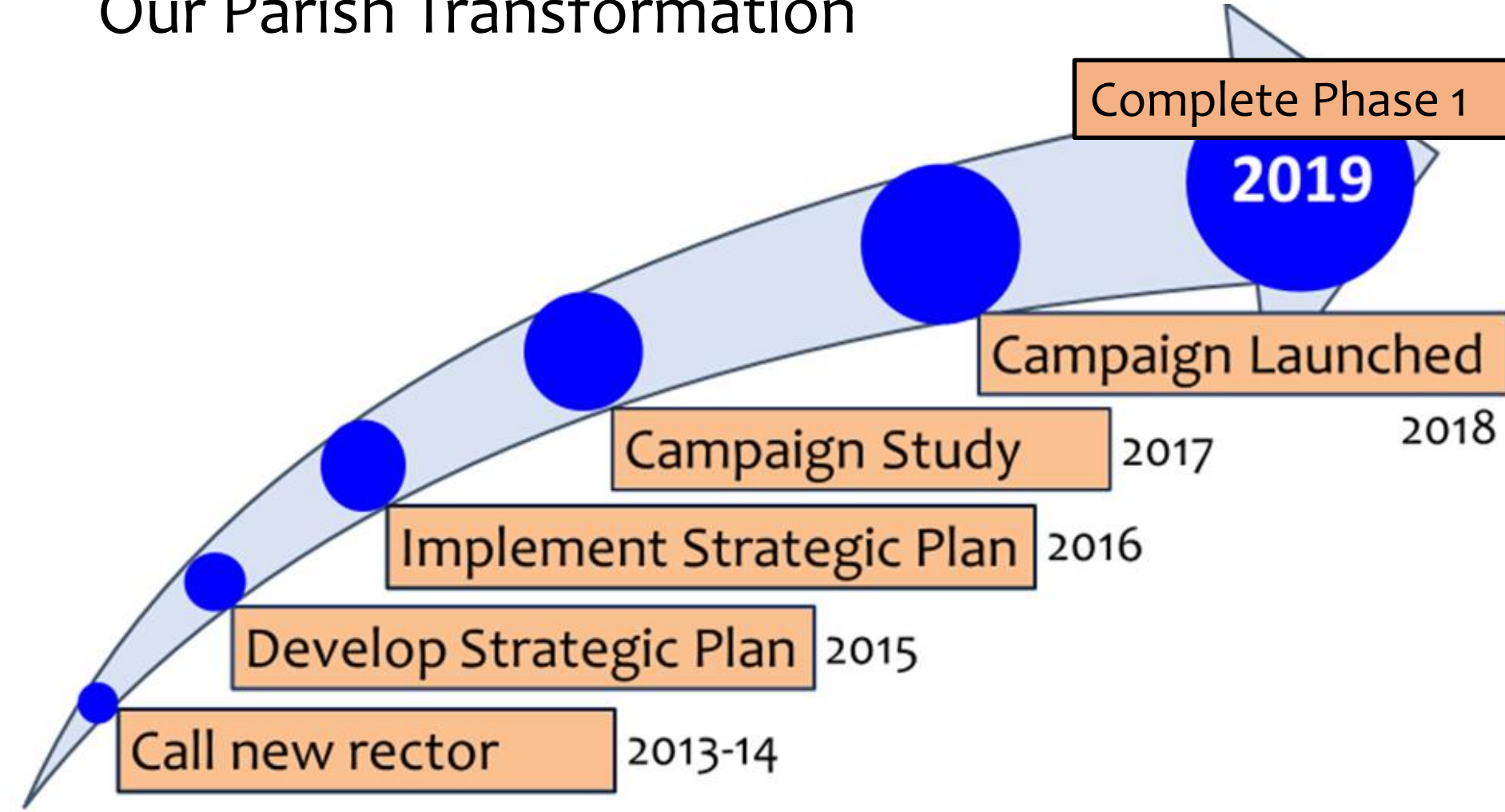
All Parish Updates September 21 and 22, 2019



ST. BARTHOLOMEW'S
EPISCOPAL CHURCH

Honor Faith. Build Future.

Our Parish Transformation



Parish Input Prioritized Campus Redevelopment Planning

- A variety of inputs: surveys, interviews, listening meetings, patio posters
- 2017 Redevelopment Feasibility Study
 - 80% of parish households provided feedback and comments
 - Survey confirmed priorities and parish commitment to campaign

Priority Level	Personal Interviews			
	High	Medium	Low	Unsure
ADA Compliant Restrooms	82.2%	9.7%	6.4%	1.6%
Remodeled Kitchen	80.9%	14.3%	3.2%	1.6%
Accessibility	80.9%	15.9%	3.2%	0.0%
New Parish Hall	77.8%	17.5%	4.8%	0.0%
Expanded Handicap Parking	74.2%	14.5%	6.4%	4.8%
New Sanctuary	30.2%	41.3%	25.4%	3.2%

87% support moving forward with campaign

Priority Level	In-Pew Survey			Online Survey		
	High	Medium	Low	High	Medium	Low
Accessibility	62.7%	24.6%	6.7%	63.3%	35.0%	1.7%
ADA Compliant Restrooms	58.2%	25.4%	14.2%	60.3%	29.3%	10.3%
Expanded Handicap Parking	44.8%	34.3%	16.4%	55.0%	38.3%	6.7%
Remodeled Kitchen	35.8%	37.3%	18.7%	40.7%	37.3%	22.0%
New Parish Hall	25.4%	47.0%	22.4%	37.9%	39.7%	22.4%
New Sanctuary	20.2%	41.8%	36.6%	24.1%	37.9%	37.9%

Architecture ARCH Committee Update

- Completion of Phase I
 - Remodeled space created new Chapel, Youth/MPR meeting room, kitchenette, updated ADA restrooms
 - ✓ Project completed on time, on budget
- CUP (*conditional use permit*) Process Update
 - ✓ City of Poway Staff Conditions of Approval 8/30/2019
 - ✓ Neighborhood Meeting – City of Poway 9/25/2019
 - Environmental Mitigated Negative Declaration 11/2019
 - Poway City Council Public Hearing 12/2019



Our New Chapel Worship Space



Site Plan Legend

- 1 167 Space Parking Lot
- 2 Entry Court
- 3 Chapel, Relocated
- 4 Youth Room, Relocated
- 5 Admin Building (Existing)
- 6 New Parish Community Center
- 7 Sanctuary (Existing)
- 8 Preschool Building (Existing)
- 9 Playground (Existing)
- 10 Columbarium (Existing)
- 11 Cross
- 12 Painted labyrinth on patio slab
- 13 Relocate Existing Solar Panels to New Parish Roof and Existing Sanctuary Roof

Tree Legend

-  New Tree
-  Existing Tree to Remain or New Tree to replace as needed
-  Tree to be removed (see Existing Tree List for type and condition)



PHASE 0A JUNE 2022 - 2023 START

- o FIRST FLOOR - PARISH COMMUNITY CENTER
- o ROOF TERRACE
- o SITE IMPROVEMENTS

PHASE 0B JUNE 2028 START

- o SECOND FLOOR - PARISH COMMUNITY CENTER
- o ENTRANCE TOWERS

PHASE 2 JUNE 2020 START

- o DEMO EXHIBIT HALL / BUILD UPPER PARKING
- o EXPAND PLAYGROUND
- o NEW COLUMBARIUM WALKWAY
- o NEW WALKWAY LOWER PARKING TO CHAPEL

PHASE 3A JUNE 2022 - 23 START

- o RENOVATE SANCTUARY
- o RESTROOMS - ADA ACCESSIBLE

PHASE 5 REPLACE SANCTUARY

TIMING TBD

PHASE 4 PRESCHOOL CLASSROOM CONVERSION & STUDENT INCREASE FROM 82 TO 154 STUDENTS TIMING TBD



PROJECT PHASING - SITE PLAN

St. Bartholomew's Episcopal Church
1500 West Washington, Suite 200
San Diego, California 92110

Architectural Services
ANOUSSTUDIO
1150 West Washington, Suite 200
San Diego, California 92110

Scale
Project No. 2104
Date: 01/20/2023
A2.0

Phase 2: New Parking Lot, Playground, Walkways

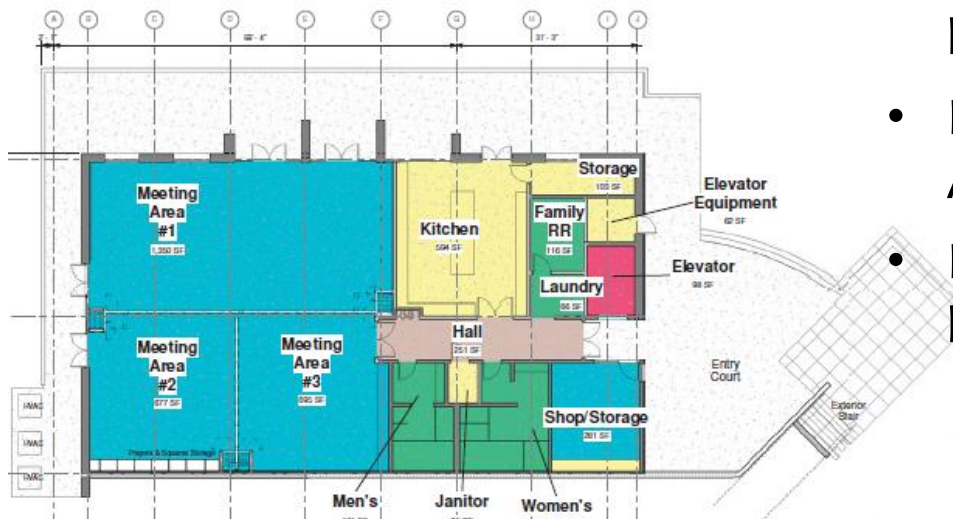
June-September 2020



- Upper Level Parking (50 spaces)
- Preschool playground expansion (1500 square feet)
- New Columbarium walkway
- New walkway to Chapel from lower parking lot

Phase 3A: Parish Community Center Ground Floor

estimate June 2022-early 2023 start date



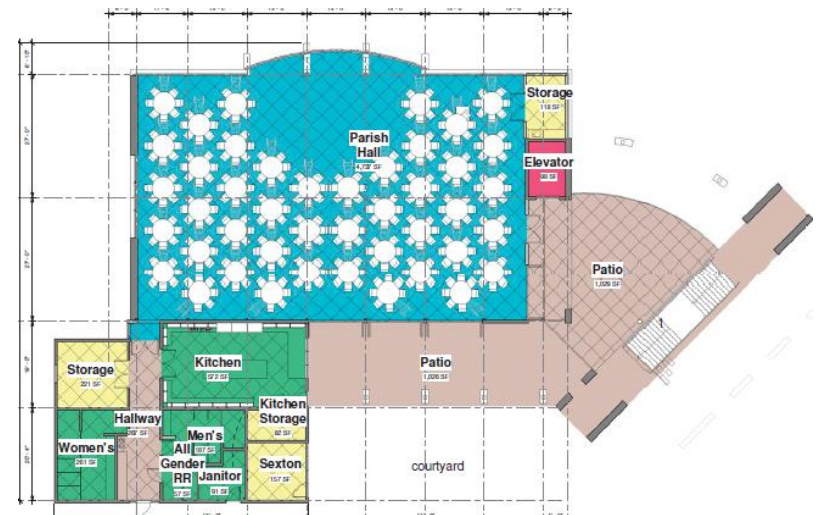
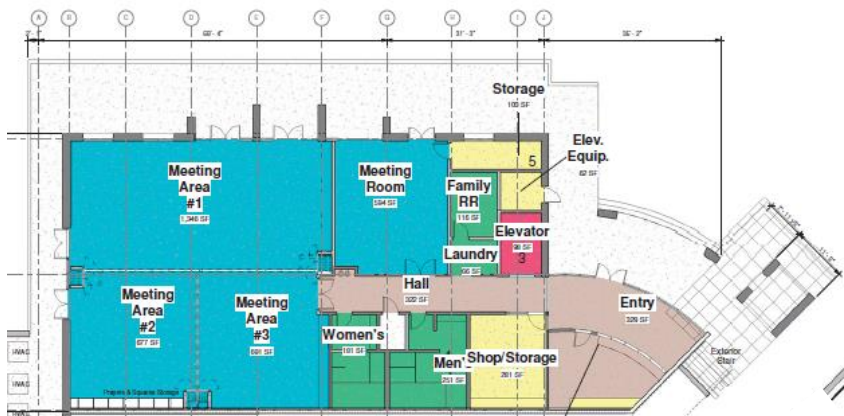
- Lower level multi-purpose meeting rooms (parish and community)
- New large kitchen (lower level)
- ADA restrooms, showers, laundry
- Elevator and new stairs to courtyard level
- Large upper level event space
- Improved lower level drop-off and handicapped parking
- Renovate Sanctuary restrooms to ADA standard
- Expand courtyard and complete lower parking lot renovation

Phase 3B: New Parish Community Center

Start date TBD--Requires New Campaign



- Large upper level meeting/worship space
- New upper level commercial kitchen
- Additional ADA restrooms--upper level
- Convert LL kitchen to 4th meeting space



Architecture ARCH Committee Update

- Potential Phase 4: plan, funding and timing TBD
 - Preschool classroom conversion to support increased enrollment to almost double current level
- Potential Phase 5: plan, funding and timing TBD
 - Build new Sanctuary



Honor Faith. Build Future. Capital Campaign

Financial Highlights 08/31/19

- Total Raised \$ 6,836,196
- Total Cash Received \$ 2,844,701

- Total Disbursements \$ 898,116
(building & campaign costs)
- Available cash \$ 1,946,585
(averaging \$50,000/month in pledge payments)

- Estimate Phase 2 (2018) \$ 1,363,449
(update Phase 2 cost estimate following CUP approval)



HFBF Campaign Plan 2019-2020

- THANK YOU to over 200 families already pledged!
- Building relationships, invitation to support
 - New(er) members
 - Longer time members who have not yet pledged
 - Selected Preschool families
- Campaign Salons
 - Oct 4th and Oct 20th (add more Nov/Dec 2019, 2020)
 - Targeting invitations to newer members and longer time members who have not yet made a pledge
- Posters and Listening on the Patio



HFBF Campaign Plan 2019-2020

- Strategy for Legacy and Estate gifts
 - Remember St Bart's in estate planning
 - Preparing updated brochure mailer, one-on-one visits with Rector to follow up
 - Members experiencing cash-flow challenges invited to consider pledge through estate gift
- Other campaign activities
 - Activate campaign teams to make one on one visits Update Building Campaign webpage
 - Update campaign video with new testimonials



Honor Faith. Build Future. Campaign Prayer

Creator God, we hear your call to honor those who came before us and to build faithfully for the future.

Guide and strengthen us to make your love real and tangible for our families, our neighbors and the world.

Prepare us as we come together in deeper purpose and commitment to you. Give us confidence when we're in doubt and help us put our full trust in you.

Use this campaign to unify our parish, future members, and our ministry partners with deep joy as we respond to your call to build for a future to love and serve all people.

We ask these things in the name of Jesus Christ our Lord. Amen.



THANK YOU

Questions, suggestions and comments to Redevelopment@stbartchurch.org

Mark Davis and Cynthia Webb : co-chairs of Architectural Committee (ARCH)
Judy Macemon and Brooke Grandinetti: co-chairs Capital Campaign