

## Campus Redevelopment Plan - The Details

Phase 1 was completed in summer 2019 renovated Administration Building space to create a Chapel, Youth/Multi-Purpose Room with adjacent kitchenette, and ADA updated bathrooms. Worship services, Youth Group, Deacon Bill's Bible Study Class, SamMul Korean Presbyterian Church, parish meetings and many additional user groups are already using these new spaces.



Youth/MPR Room Chapel--Patio

Phase 2 will be completed during summer 2020 and includes demo of the existing Parish Hall to allow construction of the expanded upper parking area, providing 50 parking spaces and safer drop off for Preschool children and folks with disabilities. We will also remove the existing steep ramp up to the Columbarium to create space for a new playground for younger children where that steep ramp used to be, and a new low-slope walkway will be constructed up to the Columbarium. And we will also complete a walkway from the lower parking lot to the upper-level Chapel patio. All the many ministries, meetings and community groups that currently meet in the Parish Hall will be relocated to alternate meeting sites during Phase 2 and Phase 3 construction.



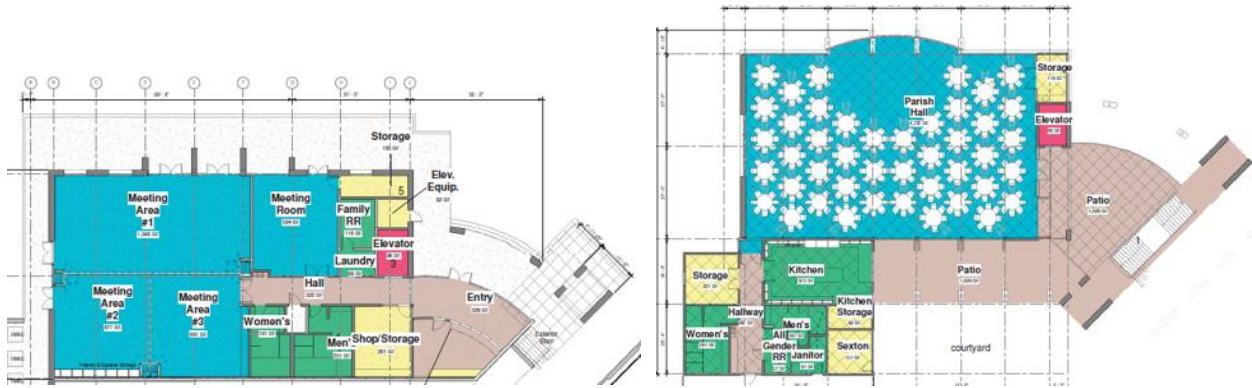
New playground New parking Lot New Columbarium walkway

Phase 3A construction, the ground floor of the Parish Community Center, will begin as soon as the campaign funding goal of \$8 million is raised and received, likely 2022 or 2023. This work provides ground-level access with the elevator and covered stairs to the courtyard level, and ground-level rooms that can be subdivided for flexible meeting space in many configurations. These combined rooms provide twice the space in our current Parish Hall for meals at tables and large meetings. This construction phase also includes lower-level commercial kitchen, ADA bathrooms, and shower and laundry facilities. The large upper deck will accommodate large parish and community gatherings, meals and concerts, and provides shades over the entire space.



With a future building campaign, we will complete the Parish Community Center upper level (Phase 3B) with the large worship and meeting space, large commercial kitchen (Phase 3A lower level kitchen will be converted to 4<sup>th</sup> lower level meeting room), and ADA restrooms.





Our campus master plan submitted to the City of Poway for conditional use permit (CUP approval) includes possible future redevelopment that might be anticipated for the next 20 years. After extensive study and business plan development to consider impact and ramp-up costs, a campus redevelopment Phase 4 with renovations to the Educational Building second floor would allow expansion of Preschool classrooms to accommodate almost twice our current enrollment of children. To be complete in the CUP submittal, our Architecture Committee and Design team also included the potential plan for a new expanded Sanctuary. Neither Phase 4 or Phase 5 is in planning stage at this time, and we included these options in the CUP submittal so we did not need to refile for CUP if these options are considered in the future.